



QUICK USER GUIDE

!!! Please refer to our website: www.geemarc.com for an up to date user guide, as there may be important updates and changes you need to be aware of !!!

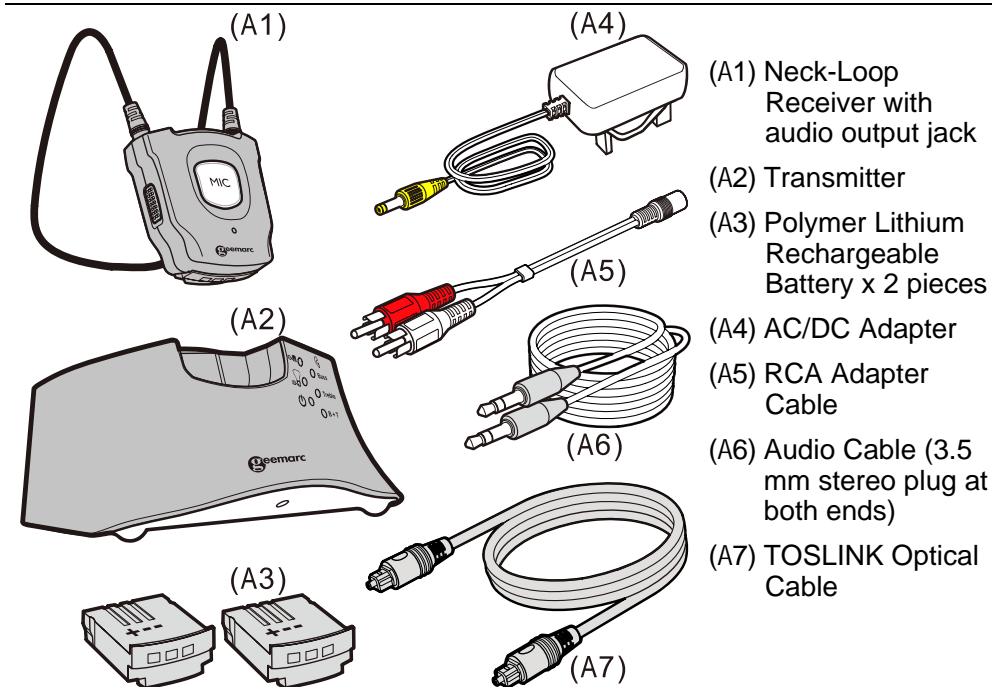
INTRODUCTION

This 2.4GHz DIGITAL WIRELESS INDUCTION NECK-LOOP SYSTEM uses the latest digital wireless technology. This enables the sound from your selected audio device directly into your hearing aids. Simply connect the transmitter to the desired audio source: TV, sound system, etc.

FEATURES

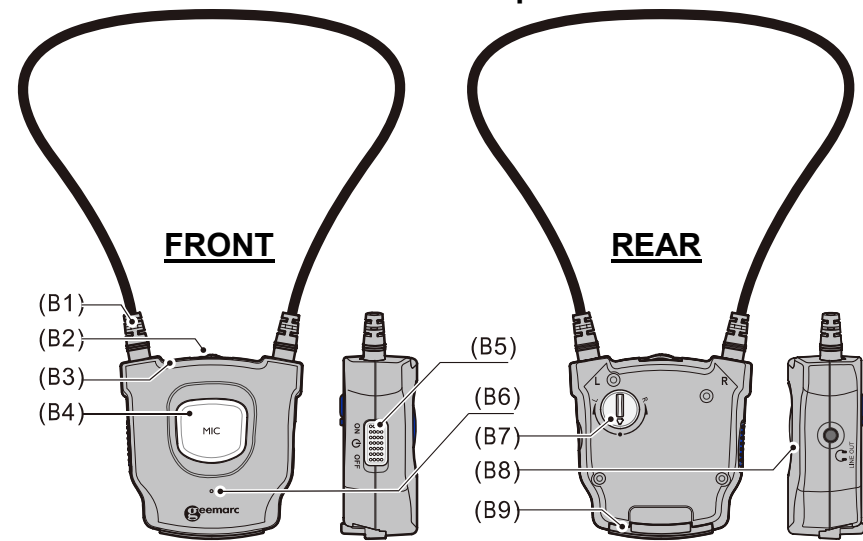
- 2.4GHz digital hopping system technology
- Inductive neck-loop transmits directly to hearing aid
- Docking charge mechanism
- Battery saving auto RF transmission off (when no audio signal)
- In personal listener mode CL7060 mutes audio input.
- Speed charging mechanism
- Spare battery for continuous use.
- Left/right balance and tone control
- Optical audio in

COMPONENT PART LIST



DESCRIPTION

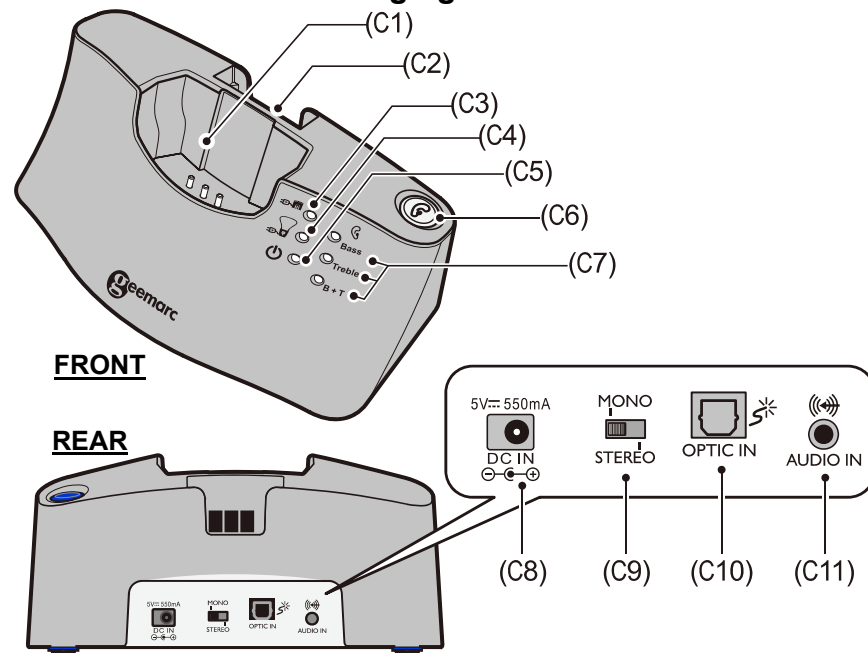
Function Identification: Neck Loop Receiver



- (B1) Break-free Plug
- (B2) Volume Adjustment
- (B3) Power on indicator
- (B4) Microphone button for room monitoring
- (B5) On/Off switch

- (B6) Microphone
- (B7) Volume balance (left/right)
- (B8) 3.5 mm Audio output jack
- (B9) Battery

Function Identification: Charging Cradle

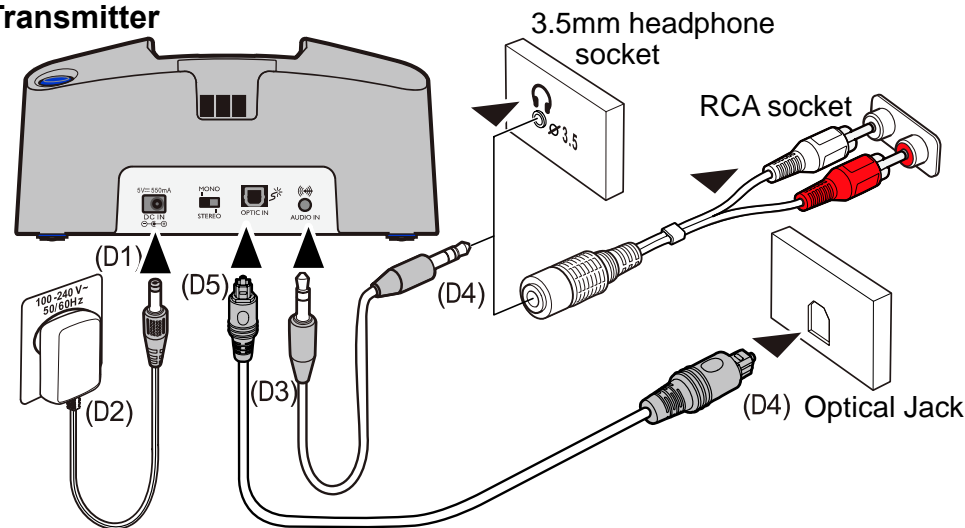


- (C1) Charging Cradle
- (C2) Spare Charging Slot
- (C3) LED Charging Indicator for Spare Battery
- (C4) LED Charging Indicator for Main Battery (attached to neck loop receiver)
- (C5) LED Power/Signal Indicator
- (C6) Tone Clarity Button
- (C7) LED Indicator of Tone Clarity
- (C8) DC In
- (C9) Mono/Stereo Select
- (C10) Optical input for TOSLINK cable
- (C11) 3.5mm Audio In

! Please note that only one input (either audio input or optical input) should be connected.

INSTALLATION

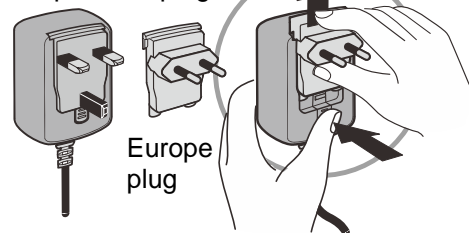
Transmitter



- (D1) Connect the power adapter to the DC IN input socket located on the transmitter rear panel.
- (D2) Connect the power adapter provided to an electrical outlet. Make sure the Power LED on the Transmitter is ON.
- (D3) Connect the transmitter to your audio source.
- (D4) RCA Adapter Cable, Audio Cable, TOSLINK cable and are provided for different types of connection to your Audio Source (e.g. TV set, sound system, etc).
- (D5) When using the TOSLINK cable ensure that the clear plastic protective covers are removed from both ends.

! Please note that only one input (either audio input or optical input) should be connected. Where possible the best audio result will be obtained by using the TOSLINK cable.

Adaptor+UK plug

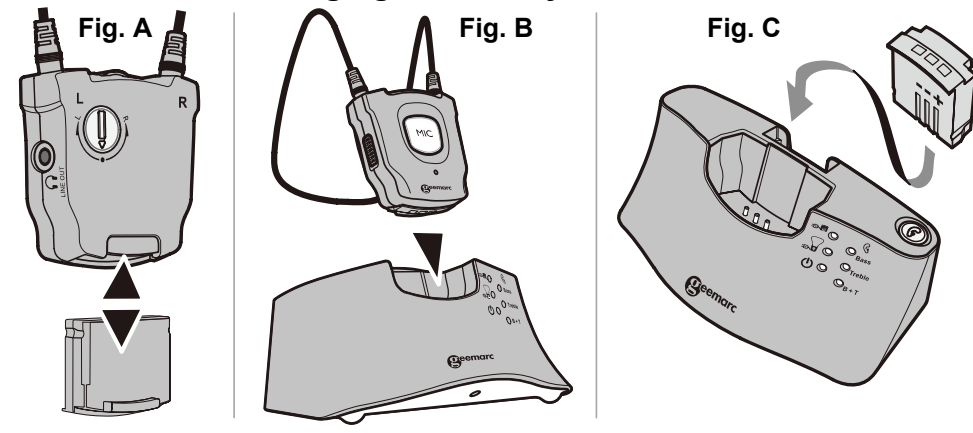


The power adaptor with detachable plugs suitable for UK and Europe.


The green power indicator LED will blink when you connect the power adapter to the electrical outlet, When the audio signal is detected from the audio source, the green LED Indicator will be on.

SETTING UP THE NECK LOOP RECEIVER

Installation and charging the battery




1. Insert a battery into the Receiver with correct polarity.(See Below Fig. A).
2. Switch off the receiver (OFF position). Charge the battery for about 3 hours before initial use.
Place the receiver into the charging cradle of the transmitter. The charging process starts automatically. The battery LED indicator will be red until the battery is fully charged, once charged it will turn green . It should take approximately 3 hours. (See Below Fig. B)
3. Insert the spare battery into the base as shown below. The LED will remain red until fully charged, once charged it will turn green . It should take approximately 3 hours. (See Below Fig. C).

-  • **A fully charged battery provides approximately 5 hours of listening pleasure.**
• **To conserve battery power, the receiver automatically turns off if no signal is detected for approx. 5 minutes or when the audio signal level is too low. When the signal returns to an acceptable level, the transmitter will automatically turn ON again.**

OPERATION

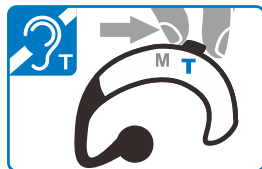
Excessive volume can cause hearing damage!

-  • **Prior to turning the receiver ON, lower the volume setting and gradually increase the volume to required level.**
• **Do not continuously listen at high volumes.**

1. Switch on the audio source (e.g. TV set, sound system, etc) that the transmitter is connected to. The green LED Indicator will be on.
2. Switch the On/Off switch on the receiver to the ON position.
3. The neck-loop induction cable transmits the audio signal directly to the hearing aid device in 'T-Mode'

Note: • **The hearing aid should be set to the T position for proper operation.**

- **Any earphone/headset must be taken out of the 3.5 mm audio output jack.**



4. Earphone or headset can be connected to the 3.5 mm audio output jack on the receiver for direct listening without hearing aids.
5. Adjust the tone clarity setting for optimum performance.

Note: **When the battery level is low, the receiver will beep 3 times every minute. The receiver will switch off automatically after 5 minutes.**

The Microphone Button

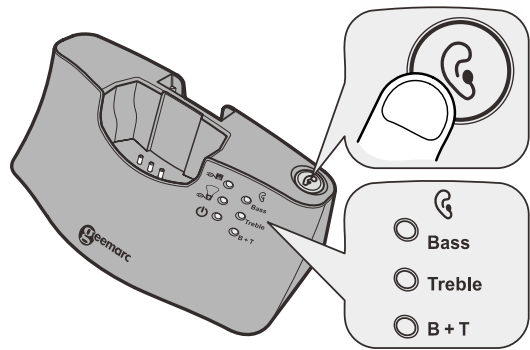
The microphone opening at the side of the receiver picks up surrounding sounds. When the microphone button is ON, you will hear the ambient sound louder.

Press the microphone button to switch on the microphone. The power-on indicator will turn from green to red and two short beeps will be heard. Ensure that the microphone opening is not covered.

You can hear your surroundings and you use the receiver as an assistive listening device which helps you hear other people clearer.

To switch the microphone OFF, press the button again. The power-on indicator will turn to green and you will be able to hear the sound from the audio source.

Tone clarity



Setting	Orange LED Indicator	Effect
Default	<input type="radio"/> Bass <input type="radio"/> Treble <input type="radio"/> B + T	Flat
B + T	<input type="radio"/> Bass <input type="radio"/> Treble <input checked="" type="radio"/> B + T	Bass Boost + Treble Boost
Treble	<input type="radio"/> Bass <input checked="" type="radio"/> Treble <input type="radio"/> B + T	Treble Boost
Bass	<input checked="" type="radio"/> Bass <input type="radio"/> Treble <input type="radio"/> B + T	Bass Boost

You can set the Tone Clarity by using the key on the transmitter. Press and release the key repeatedly until you get the optimum setting. The current setting will be indicated by the status of the three LED's.

The above table shows the settings. Check which setting works best for you.

TROUBLESHOOTING

No Sound

- Ensure that the mains adapter is fully pushed into the power outlet and that the cable is properly connected to the DC IN connector on the transmitter.
- Ensure that the Headset Power ON/OFF switch is switched ON.
- Check the state of the Battery charging in the Headset – place it in the Charge Cradle and recharge the battery until the Battery Charge LED turns green.
- Ensure that the TV set, Hi-Fi system or audio component is switched ON and set to a channel that broadcasts an audio signal.
- Ensure that the volume on the connected audio component is turned up to at least half its full volume.
- The connected audio/video equipment may not be in playback mode. Start playback on the equipment.
- Use the Volume Control on the Headset to turn up the volume.
- Check whether the Headset volume level is set too low. Adjust the volume to a suitable level.
- Try using a different connection RCA or OPTICAL.

Distortion

- The battery inside the Headset may need charging. Recharge the battery.
- The Headset may be too far away from the transmitter inside the Charge Cradle. Bring them closer together.
- The audio signal input level is too low. Increase the volume from the audio source.
- The audio signal input level may be too high, lower the volume from the audio source.

 **In the event that the neck loop receiver cannot be linked with the transmitter. Please follow the following procedure for pairing:**

1. Turn **OFF** the power of the transmitter.
2. Turn **ON** the receiver.
3. Press and hold the MIC Button for about 5 seconds, the Green LED will flash on

- and off rapidly on the receiver. Turn **ON** the transmitter power.
4. The receiver and the transmitter will then be automatically paired, and the Green LED on the receiver will show a constant light.

WARNING:

The battery must not be exposed to excessive heat such as sunshine, fire etc.

Do not attempt to replace the original rechargeable battery.

When the headphones are not in use, move the switch to the OFF position to avoid damaging the batteries.

The battery must always be fully charged before first use. An initial 3 hours charge is required to guarantee an acceptable service life for the rechargeable battery. Always ensure that the Receiver is switched to OFF position while the battery is charging.

Excessive sound pressure from earphones and headphones can cause hearing loss.

IMPORTANT :

This unit should be operated with rechargeable batteries only. When replacing the battery or when disposing of the unit, always comply with applicable laws relating to the disposal of batteries. Please place them in a proper disposable container to ensure that they are eliminated safely and in an environmentally friendly way.

TECHNICAL SPECIFICATIONS

Transmission mode	: Digital Hopping System		
Carrier frequency	: 2.4GHz ISM BAND		
Frequency response	: 30 Hz – 10K Hz		
Range	: Up to 20 meters (open area)		
Signal-to-noise ratio	: >70 dB		
Distortion	: <0.5%		
Headset weight	: 78 grams	Transmitter Weight	: 115 grams
Operating voltage	: Transmitter : 5V, 550mA : Headset: 3.7V, 350 mAh Lithium Polymer Battery		
Operation time	: Fully charged battery – up to 5 hours		
Charging time	: Empty battery – Approx. 3 hours		

SAFETY, CARE AND MAINTENANCE

- The system is designed to operate from a 100-240V AC supply and does not have an integral on/off switch. To disconnect the power switch the mains power point switch to OFF or unplug the power supply (AC-DC adapter);
- Keep away from heat sources such as hot-plates, and heat generating appliances;
- Keep away from water and other fluids;
- Repairs must be carried out by qualified personnel;
- We suggest that a power surge protector is connected between the mains supply power point and the AC-DC adapter.



For Users with a Pacemaker

If you have a pacemaker it is recommended that you speak with your doctor or health advisor before using this product.

GUARANTEE

From the moment your Geemarc product is purchased, Geemarc guarantee it for the period of two years. During this time, all repairs or replacements (at our discretion) are free of charge. Should you experience a problem then contact our help line or visit our website at www.geemarc.com.

The guarantee does not cover accidents, negligence or breakages to any parts. The product must not be tampered with or taken apart by anyone who is not an authorized Geemarc representative.

The Geemarc guarantee in no way limits your legal rights.

IMPORTANT: YOUR RECEIPT IS PART OF YOUR GUARANTEE AND MUST BE RETAINED AND PRODUCED IN THE EVENT OF A WARRANTY CLAIM.

Please note: The guarantee applies to the United Kingdom only.

DECLARATIONS

CE Directives

Geemarc Telecom SA hereby declares that this product is in compliance with the essential requirements and other relevant provisions of the Radio and Telecommunications Terminal Equipment Directive 2014/53/UE.

The CE declaration of conformity may be consulted at www.geemarc.com

Electrical connection: The apparatus is designed to operate from a 230V 50Hz supply only. (Classified as hazardous voltage according to EN60950 standard). The apparatus does not incorporate an integral power on/off switch. To switch off the apparatus, disconnect the power adaptor.

When installing the apparatus, ensure that the mains power socket is readily accessible.

Recycling Directives

The WEEE (Waste Electrical and Electronic Equipment) has been put in place for the products at the end of their useful life are recycled in the best way.

When this product is finished with, please do not put it in your domestic waste bin. Please use one of the following disposal options:

- Remove the batteries and deposit them in an appropriate WEEE skip.

Deposit the product in an appropriate WEEE skip.

- Or, hand the old product to the retailer. If you purchase a new one, they should accept it.

If you respect these instructions you ensure human health and environmental protection.



For product support and help visit our website at www.geemarc.com

Contact Geemarc UK:

5B Swallow Court, Swallowfields, Welwyn Garden City, Hertfordshire, AL7 1SB,UK

telephone **01707 387602**

or fax **01707 832529**